



SNOWLINE
GOLD CORP

SNOWLINE GOLD CORP

A New Light on the Yukon

Investor Presentation

MAY 2024

TSX-V: SGD | OTCQB: SNWGF

CAUTIONARY DISCLAIMER

The information in this presentation is in a summary form and does not purport to be complete. It is not intended to be relied upon as advice to investors or potential investors and does not take into account the investment objectives, financial situation or needs of any particular investor.

This presentation includes certain statements that may be deemed "forward looking statements". All statements in this presentation, other than statements of historical facts, that address events or developments that Snowline expects to occur, are forward looking statements, including statements relating to the use of proceeds from the financing and property exploration plans. Forward looking statements are statements that are not historical facts and are generally, but not always, identified by the words "expects", "plans", "anticipates", "believes", "intends", "estimates", "projects", "potential" and similar expressions, or that events or conditions "will", "would", "may", "could" or "should" occur. Such statements reflect Snowline's current views and intentions with respect to future events, and current information available to Snowline, and are subject to certain risks, uncertainties and assumptions. Many factors could cause the actual results, performance or achievements that may be expressed or implied by such forward-looking information to vary from those described herein should one or more of these risks or uncertainties materialize.

Certain of the "risk factors" that could cause actual results to differ materially from the Company's forward-looking statements include, without limitation risks relating to the following: risks to operations in the Yukon; political instability; nationalization of the mining industry; opposition from local residents and non-governmental organizations; changes to governmental regulations or regulatory requirements in the Yukon; environmental risks; licensing and permitting risks; substantial capital requirements; no mineral resources or reserves on Snowline's properties; development and operating risks; reliance on management and dependence on key personnel; health and safety risks; fluctuating mineral prices; currency fluctuations; supply chain interruptions; and other factors beyond the control of the Snowline. Should any factor affect Snowline in an unexpected manner, or should assumptions underlying the forward-looking information prove incorrect, the actual results or events may differ materially from the results or events predicted. Any such forward-looking information is expressly qualified in its entirety by this cautionary statement. Moreover, Snowline does not assume responsibility for the accuracy or completeness of such forward-looking information. The forward-looking information included in this presentation is made as of the date of this presentation and Snowline undertakes no obligation to publicly update or revise any forward- looking information, other than as required by applicable law.

This presentation has been prepared by Snowline using its best efforts to realistically and factually present the information contained herein. However, subjective opinion, dependence upon factors outside Snowline's control and outside information sources unavoidably dictate that Snowline cannot warrant the information contained to be exhaustive, complete or sufficient. In addition, many factors can affect the Presentation which could significantly alter the results intended by Snowline, rendering the Presentation unattainable or substantially altered. Therefore, readers should conduct their own assessment and consult with their own professional advisors prior to making any investment decisions.

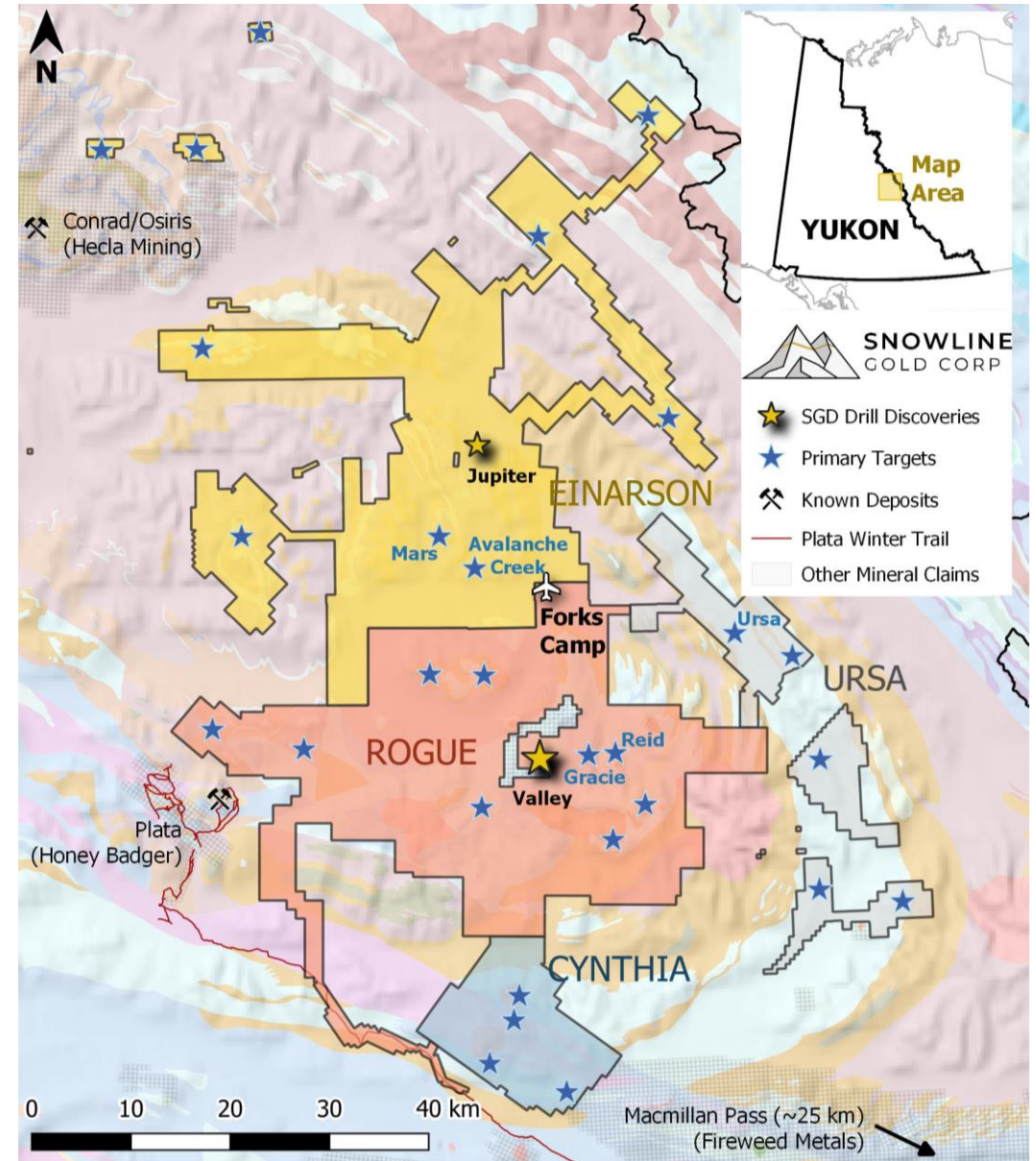
This presentation does not constitute a prospectus or public offering for financing, and no guarantees are made or implied with regard to Snowline's proposed ventures. There is no guarantee that valuable minerals can be produced profitably from our projects, or at all. The presentation is being disclosed to the reader for the reader's discussion, review, and/or evaluation only. The reader agrees to hold the presentation, and all related information and discussions, in strict confidence, except that the reader may disclose the presentation to a limited number of advisors and employees of the reader to the extent necessary for the reader to adequately evaluate the presentation. The reader warrants that any such persons shall be advised of the confidential nature of the presentation before gaining access to the same and that no such advisor or employee shall use or disclose the presentation except as permitted by this presentation. Historical Geological Information: Any geological information and results presented which were not conducted by Snowline are believed to be accurate but have not been verified.

Qualified Person: J. Scott Berdahl, P.Geo., Snowline's Chief Executive Officer and a director, is the qualified person under NI 43-101 for the Company. He has reviewed, approved and verified the technical content of this presentation.

This presentation does not constitute an offer to sell or the solicitation of an offer to buy, nor shall there be any sale of the securities of Snowline in any jurisdiction in which such offer, solicitation or sale would be unlawful prior to registration or qualification under the securities laws of such jurisdiction. The securities of Snowline have not been and will not be registered under the United States Securities Act of 1933, as amended (the "U.S. Securities Act"), or any state securities laws and may not be offered or sold within the United States, unless an exemption from such registration is available, information concerning the assets and operations of Snowline included in this presentation has been prepared in accordance with Canadian standards and is not comparable in all respects to similar information for United States companies.

INVESTMENT HIGHLIGHTS

- ✓ **FOUNDATION OF A DEVELOPER:**
Rapidly advancing our **flagship Valley discovery**, a best-in-class reduced-intrusion gold system with strong, consistent gold grades (**up to 2.5 g/t gold over 553m from surface**)
- ✓ **UPSIDE OF AN EXPLORER:**
Prospective **>360,000 ha land package** with **30+ gold targets across eight projects** targeted by aggressive exploration campaigns in underexplored Yukon Territory
- ✓ **STRONG TREASURY & MANAGEMENT TEAM**
>\$74M treasury with highly experienced, Yukon-focused management and technical teams
- ✓ **COMMITMENT TO ENVIRONMENT, COMMUNITY & RESPONSIBLE EXPLORATION**
Recipient of the **2023 Robert E. Leckie Award** selected by Yukon Government and First Nations for Snowline’s environmental stewardship efforts



A NEXT-GENERATION EXPLORER



SNOWLINE GOLD IS DRIVEN BY FOUR GUIDING PRINCIPLES:

ENVIRONMENTAL RESPECT

Recognition that the Yukon's wilderness is an invaluable asset with a commitment to responsible exploration

BUILDING COMMUNITY

Working to benefit local communities, First Nations and the Yukon Territory with skills training, economic opportunities and local partnerships

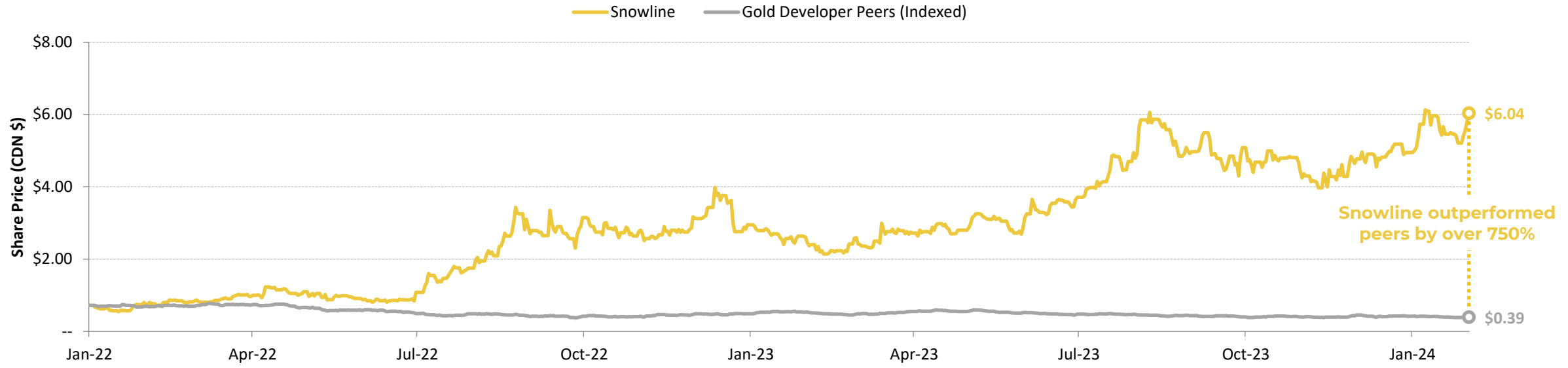
GOING BIG

Exploring blue-sky concepts in fertile rocks for game-changing discoveries and sustainable projects

DOING THINGS RIGHT

Commitments to safety, integrity and exceeding best practices; to scientific rigour and stewardship of shareholder's funds

CREATING SHAREHOLDER VALUE



2022 ACCOMPLISHMENTS

- **Drilled 318.8 m of 2.55 g/t Au from surface** (drill hole V-22-010) among other widely spaced highlight holes
- Established a **green energy partnership with Nacho Nyak Dun Development Corporation** for a 27-kW solar power facility
- Recruited a **strong in-house exploration and management team**
- Closed a **non-brokered \$25.2 M financing**, allowing Snowline to ramp up scale and pace of exploration

2023 ACCOMPLISHMENTS

- Drill results consistently show **robust grade, scale and continuity of gold mineralization beginning at or near surface**, with highlight intervals averaging **2.48 g/t Au over 553.8 m** (drill hole V-23-039) and **2.46 g/t Au over 519.6 m** (V-23-061)—both from surface
- Initial metallurgical tests demonstrate **high gold recoveries and non-refractory gold mineralization** at Valley
- Received the **2023 Robert E. Leckie Award for Excellence in Environmental Stewardship** from the Government of Yukon
- Raised a total of **C\$35.7M at an average 75% premium to market** including a **9.9% strategic investment by B2Gold**

CAPITAL STRUCTURE

CAPITAL STRUCTURE

Basic Shares Outstanding	157.2 M
<i>Options (\$0.30 – \$5.38 strike price; \$25.1 M total redemption*)</i>	10.6 M
<i>Warrants (\$2.50 – \$3.50 strike price; \$3.6 M total redemption)</i>	1.4 M
<i>Restricted Share Units</i>	0.1 M
Fully Diluted Shares Outstanding	169.3 M
Share Price (May 1, 2024)	\$5.73
Basic Market Capitalization (May 1, 2024)	\$900.8 M
Cash (May 1, 2024)	\$74.2 M

All figures in Canadian dollars
 *A large proportion of stock options have not yet vested

ANALYST COVERAGE


 Michael Gray


 Peter Bell


 Allison Carson

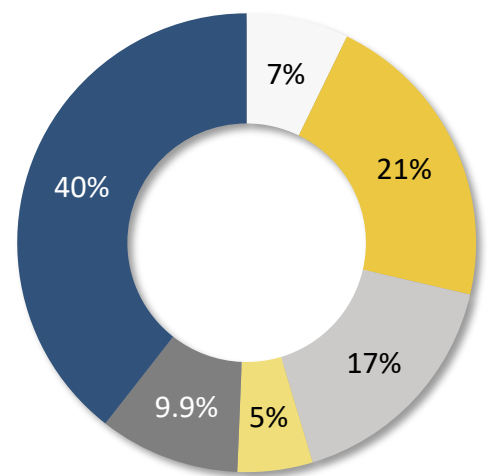

 Stefan Iannou


 Rabi Nizami


 Don Maclean


 Brandon Gaspar

SHAREHOLDER OWNERSHIP



- Management
- Other Insiders
- Institutions & Funds (Known)
- Keith Neumeyer
- B2Gold
- Retail & Other Funds



















THE TEAM

MANAGEMENT



Scott Berdahl, MSc, MBA, PGeo
CEO & Director, Co-Founder



Matthew Roma, CPA
CFO



Sergio Gamonal, M.Sc.
Chief Geologist



Thomas Branson, MSc, PGeo
VP Exploration



Brian Hegarty, MSc, BSc
VP Sustainability &
External Relations



Stephanie Hansen, BA
Director of Marketing & IR



Steve Rennalls, MSc Admin
Director of Operations



Zoë Goodyear, BSc
Database Manager



Andrew Turner
Exploration Manager

BOARD (includes CEO)



Craig Hart, PhD, FSEG, FGAC
Independent Chair



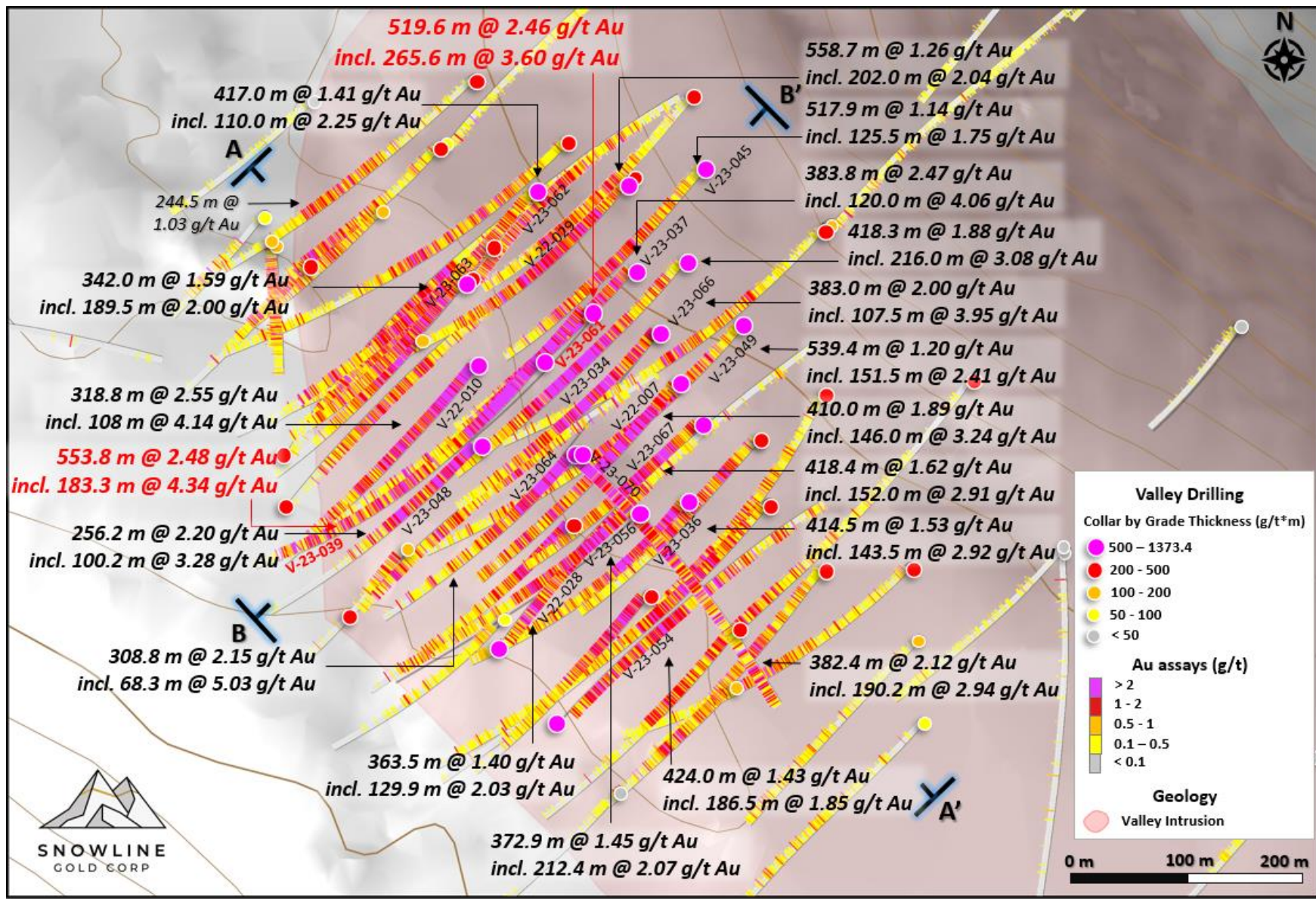
Sarah Weber, BSc, MBA, PGeo
Independent Director



Calum Morrison, CPA, CFA
Independent Director

ROGUE PROJECT - VALLEY DISCOVERY

- **NEW, AT-SURFACE, BULK TONNAGE DRILL DISCOVERY** with **large, open 3D volume** and **strong gold grades** ideally situated for efficient extraction
- **ROBUST GRADE CONSISTENCY** **Strong continuity** within and between holes, with **highest grades at surface**
- **EXCEPTIONAL RESULTS** **Unusually high gold grades** for deposit model type, with setting, age and style comparable to multi-million-ounce deposits, including **Ft Knox (Kinross)** and **Eagle (Victoria Gold)**



ROGUE PROJECT - VALLEY DISCOVERY

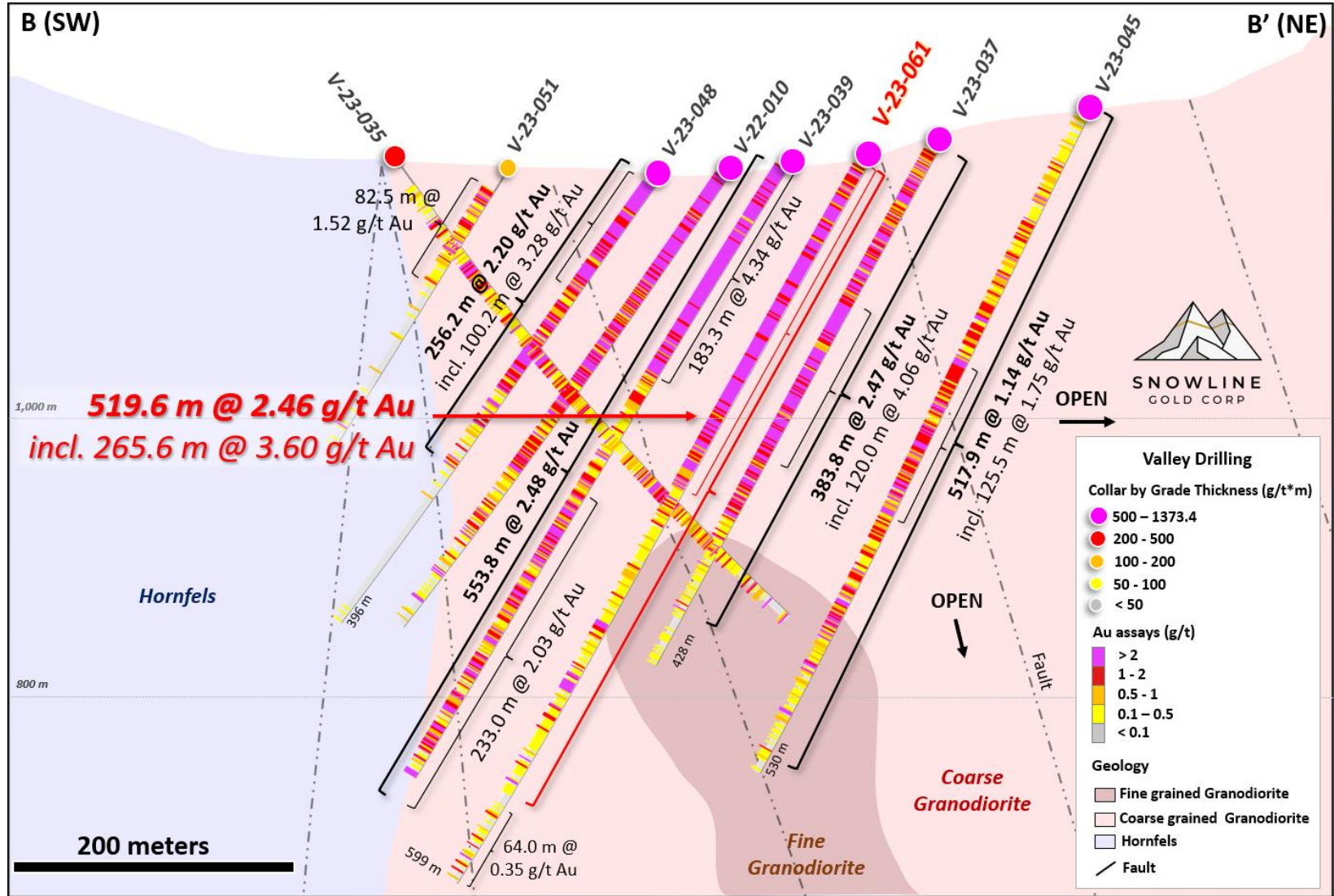
V-23-039

5.0 g/t Au over top 132.0 m

Entire hole:
2.5 g/t Au
over **553.8 m**

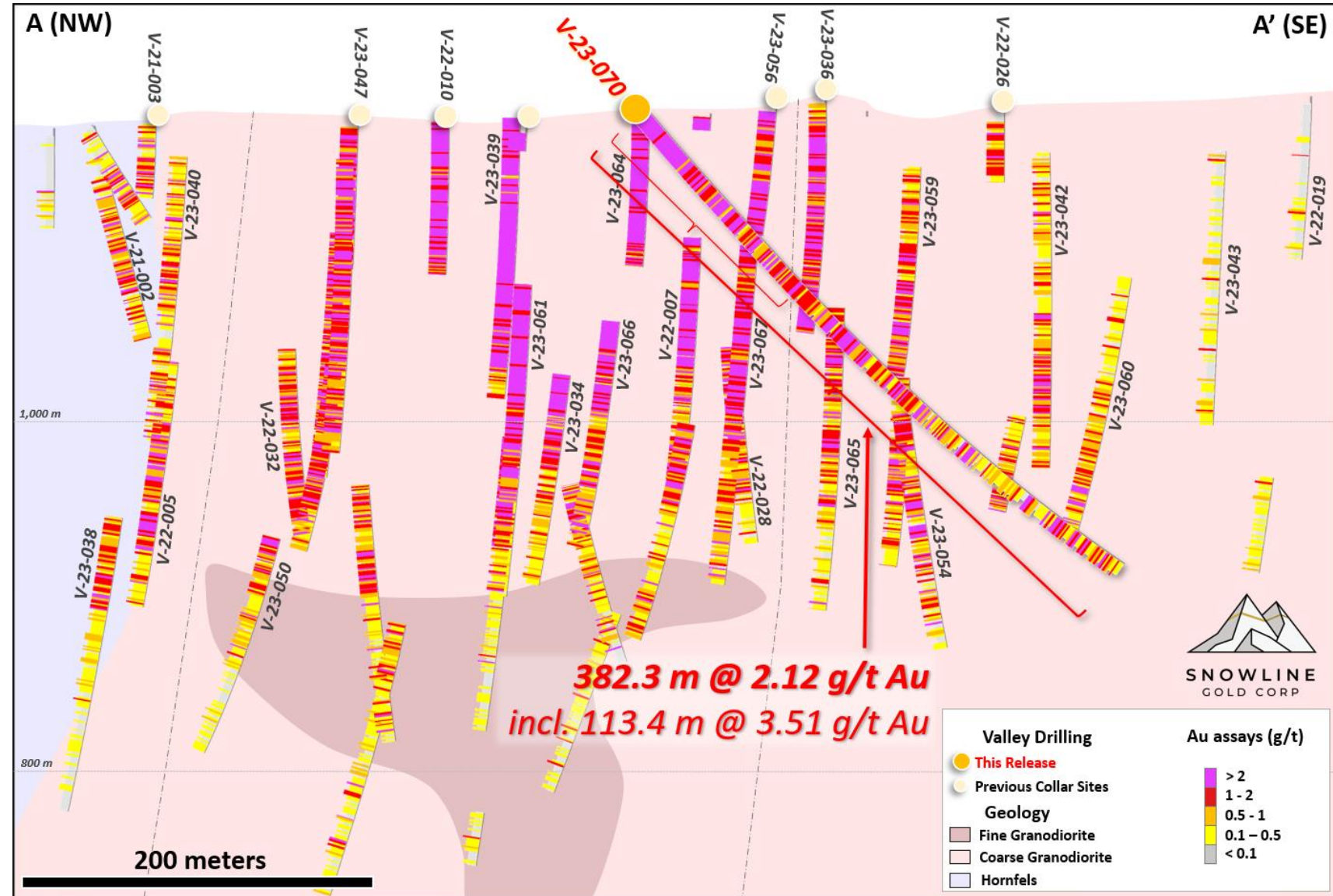


Pink: >5 g/t Au
Red: >2 g/t Au
Orange: >1 g/t Au



ROGUE PROJECT - VALLEY DISCOVERY

- RECENT RESULTS: V-23-070**
 The **entirety of hole V-23-070 is mineralized**, with the **highest sustained grades closest to surface**
- A NEW DIMENSION OF GOLD MINERALIZATION**
 V-23-070 – First hole to be drilled perpendicular to previous holes, returned **382.4 m averaging 2.12 g/t Au**, including **113.4 m of 3.51 g/t Au from surface**
- OPEN IN MULTIPLE DIRECTIONS**
 Continuity of strong mineralization extending to the southeast further demonstrates the open nature of >1 g/t mineralization at Valley



INDUSTRY LEADING DRILL RESULTS

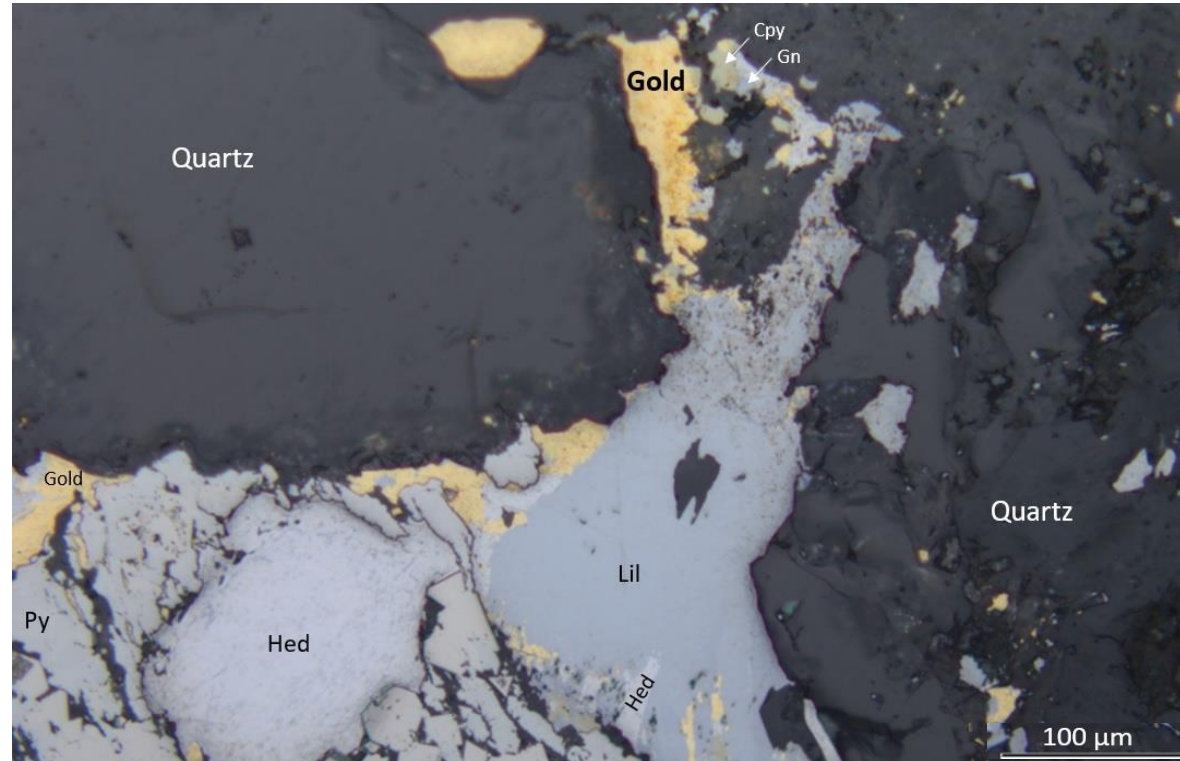


Snowline drilled 8 of the top 10 drill holes for potential open pit, bulk tonnage gold projects since 2022 (all from surface), including 6 drill holes from its 2023 exploration program

Source: S&P Capital IQ
 Note: Drill holes since 2022 with <400 m ending depth and >100 m interval width by gold developers with >US\$50 M market capitalization.
 Note: Depth shown on an approximate basis; interval angle not representative of dip. *V-23-061 and V-23-039 results truncated at 400 m vertical depth.

ROGUE PROJECT - VALLEY DISCOVERY

- FAVOURABLE INITIAL METALLURGY**
 with average gold recoveries between **94.1%** (bottle roll) and **95.7%** (carbon-in-leach) on 75 µm grind (48 hrs)
- CLEAN MINERALIZATION with strong natural buffering**, low sulphur, low levels of deleterious elements
- ADVANCED METALLURGICAL TESTING UNDERWAY**
 Large diameter **85 mm PQ drill hole** in progress.
 Results pending

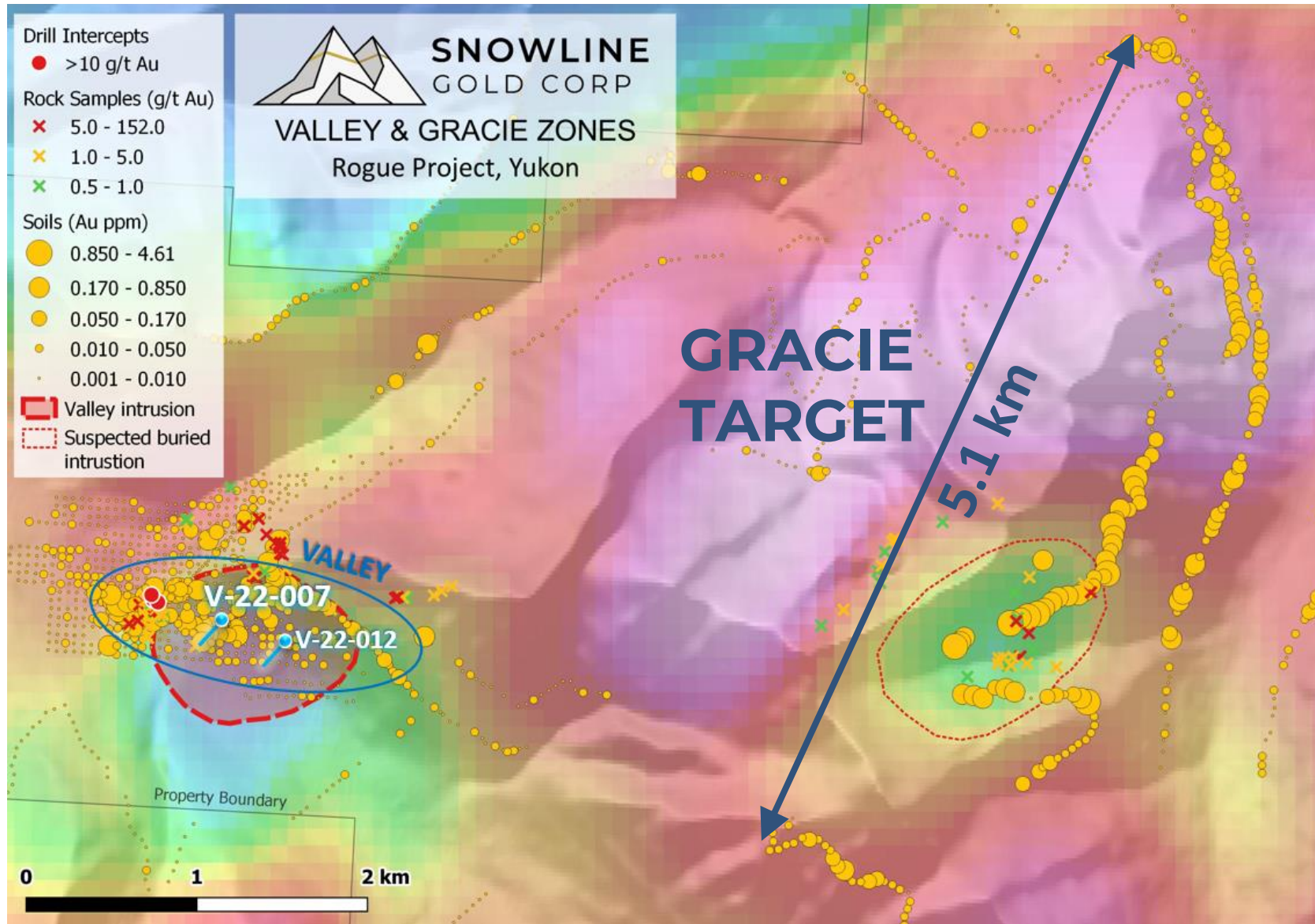


Predominantly native gold often along grain boundaries makes for versatile metallurgy and high recoveries through various conventional processing methods. Low sulfur content, natural buffering and low levels of various deleterious elements at Valley make for viable permitting, reclamation and closure. Py=Pyrite, Cpy=Chalcopyrite, Gn=Galena, Hed=Hedleyite, Lil=Lillianite.

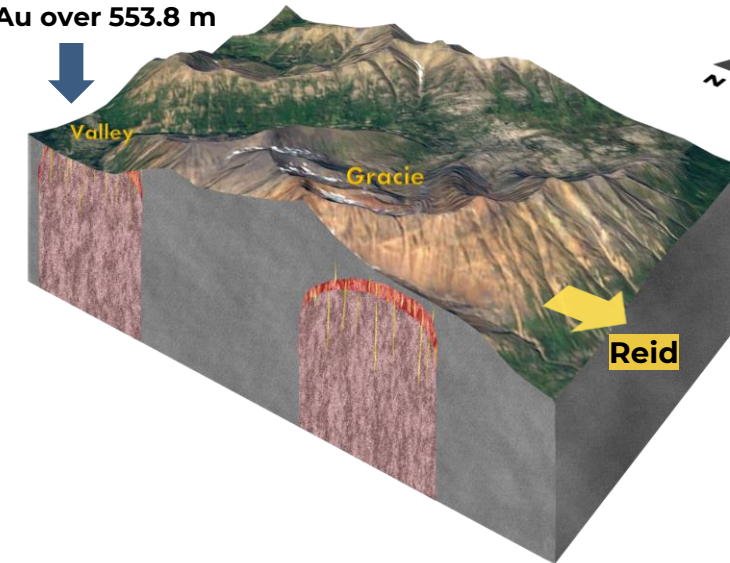


*Hole V-23-061 returned **519.6 m** averaging **2.46 g/t Au**, including **3.60 g/t Au** over **265.6 m** from surface*

ROGUE PROJECT - GRACIE TARGET



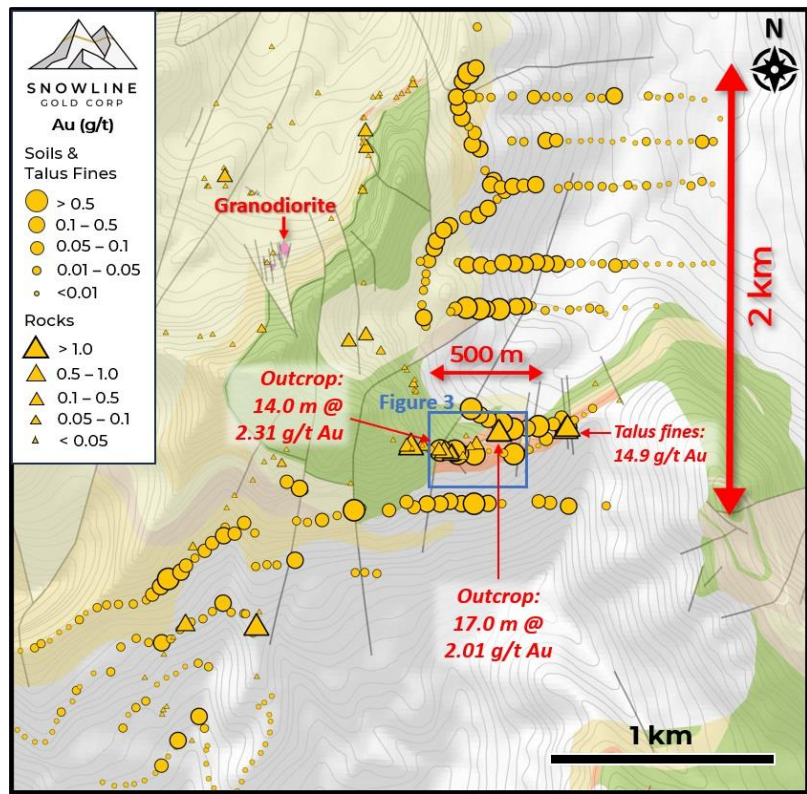
Valley Snowline
drilling to **2.5 g/t**
Au over 553.8 m



- **GRACIE:** Kilometers-scale gold-in-soil/talus fines anomaly above **intact intrusion**
- 43 talus fine samples from a 1,600 x 800 m central area **average 0.49 g/t Au**, with **8 samples >1 g/t Au**
- **Visible gold and localized high grades** observed in multiple drill holes

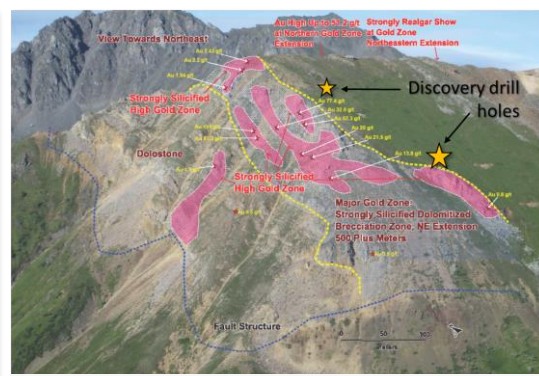
UNLOCKING A DISTRICT

>330,000 HECTARE LAND PACKAGE AND 30+ PRIMARY TARGETS



Rogue Project - Aurelius Target:

Newly discovered (2023) 2,000 by 500 m anomaly with trench **2.01 g/t Au over 17.0 m**



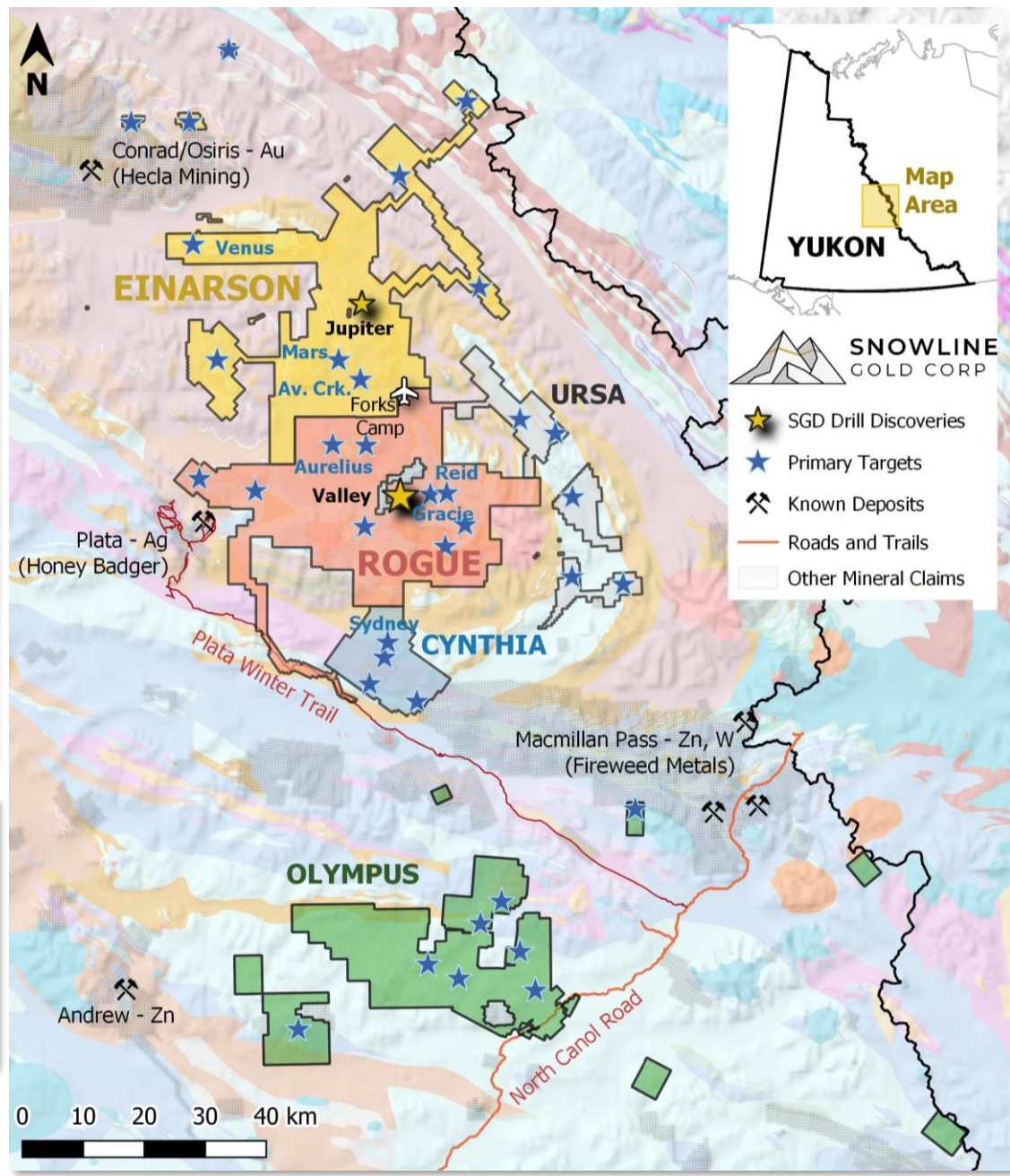
Einarson Project - Venus:

Historical (2012) drilling to **9.67 g/t Au over 38.7 m**, surface grab samples to **191 g/t Au**



Einarson Project - Mars:

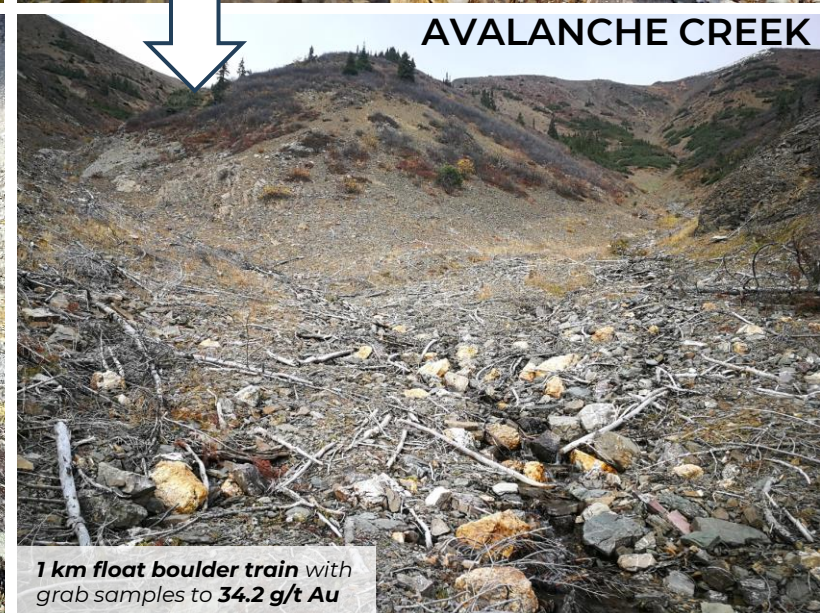
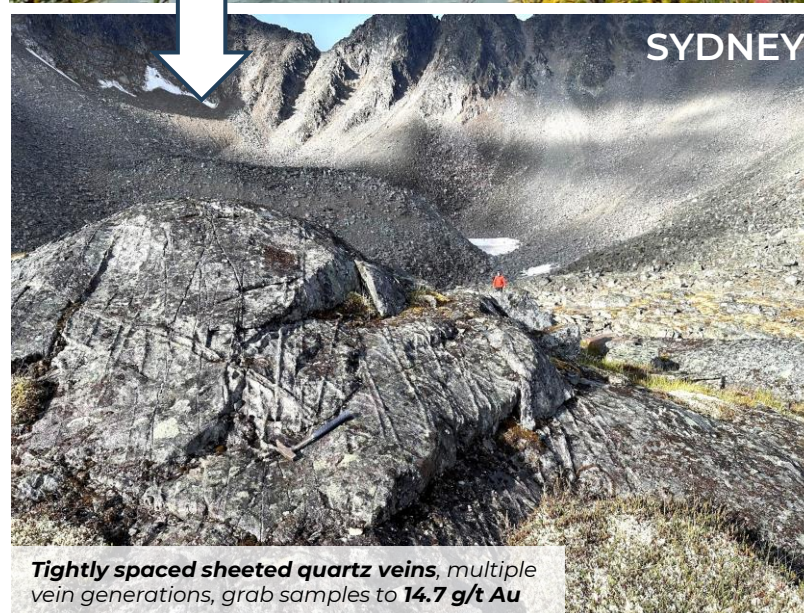
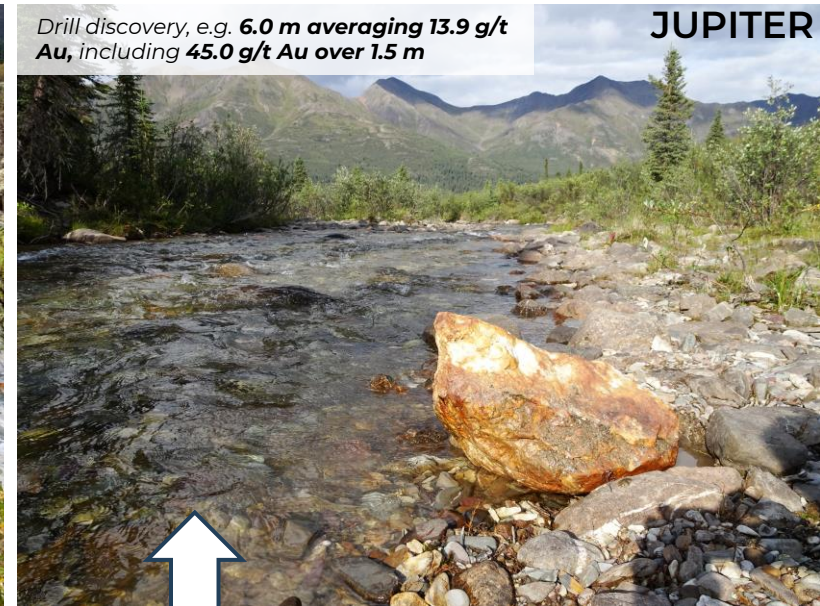
4 km gold-in-soil anomaly, historical (2012) trench **7.1 g/t Au over 5.0 m**



UNEXPLORED, PROSPECTIVE GROUND

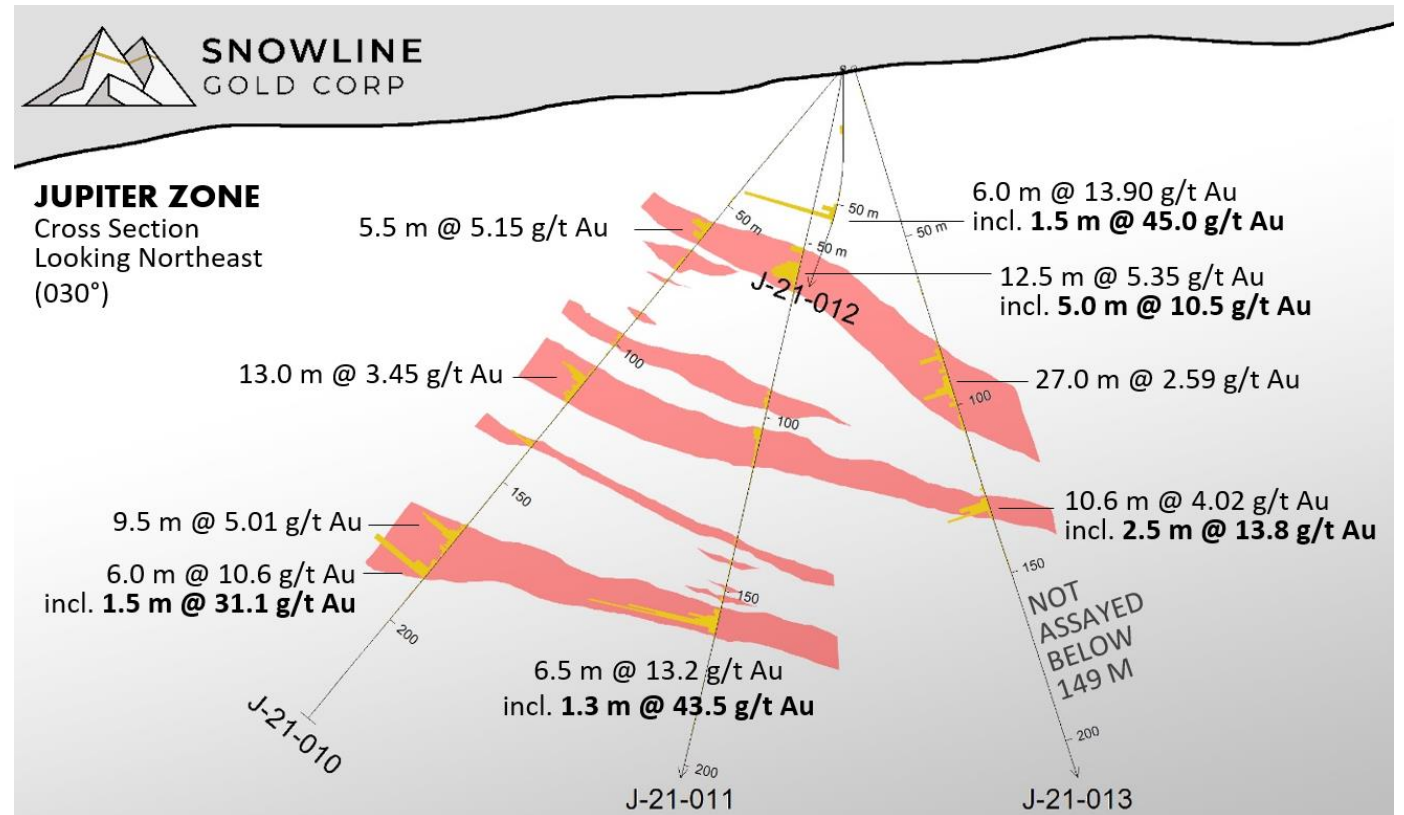
- **SNOWLINE DRILL DISCOVERIES:** Large mineralized systems discovered in outcrop and as float, with no prior exploration history

- **NUMEROUS UNTESTED TARGETS:** Similar prospective targets across project portfolio, with **five new outcropping target areas discovered in 2023**



EINARSON PROJECT - JUPITER DISCOVERY

- **EPIZONAL OROGENIC GOLD** system – a novel discovery for this region
- **WIDESPREAD MINERALIZATION** to **13.9 g/t Au over 6.0 m** (including **45.0 g/t Au over 1.5 m**) encountered in first-ever drill testing at Jupiter
- **MULTIPLE HIGH-GRADE INTERCEPTS** along individual drill holes. Gold found in **quartz carbonate veins** and disseminated through large zones of **altered wall rock**
- **BLIND TARGET** all holes somewhat random tests of system
- **POTENTIAL ANALOGUES** include Agnico’s **Fosterville Gold Mine** and New Found Gold’s **Queensway discoveries**



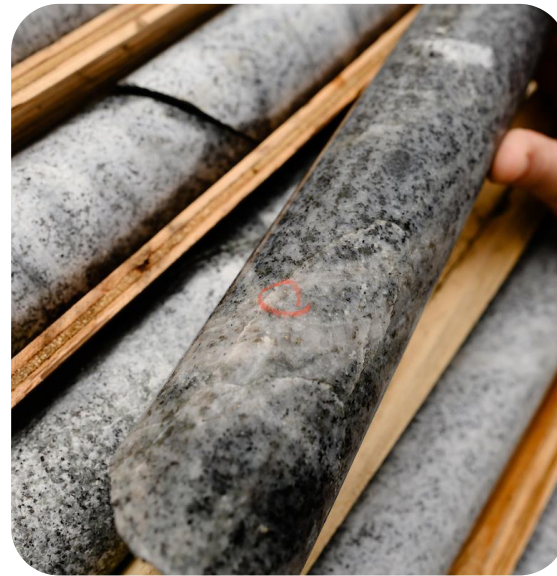
J-21-011: 6.5 m @ 13.2 g/t Au

LOOKING AHEAD – 2024 EXPLORATION



VALLEY DISCOVERY (15,000m+)

- **Phase IV drilling** towards **expansion** of the still-open system and **resource definition**
- Focus on advanced permitting and economic evaluation to progress towards production decision
- Construction of 50-person camp



REGIONAL DRILLING (10,000m+)

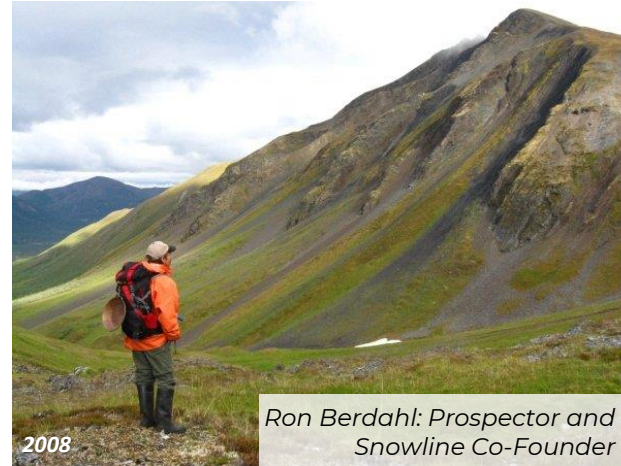
- **Phase II drilling** of multiple regional targets, following up on promising results from 2023
- **Phase I drilling** of additional RIRGS targets in within the Rogue Plutonic Complex



REGIONAL GREENFIELDS EXPLORATION

- Extensive **geochemical, geological** and **geophysical** vectoring towards and **advancement of mineralized intrusions** thought to be siblings to Valley

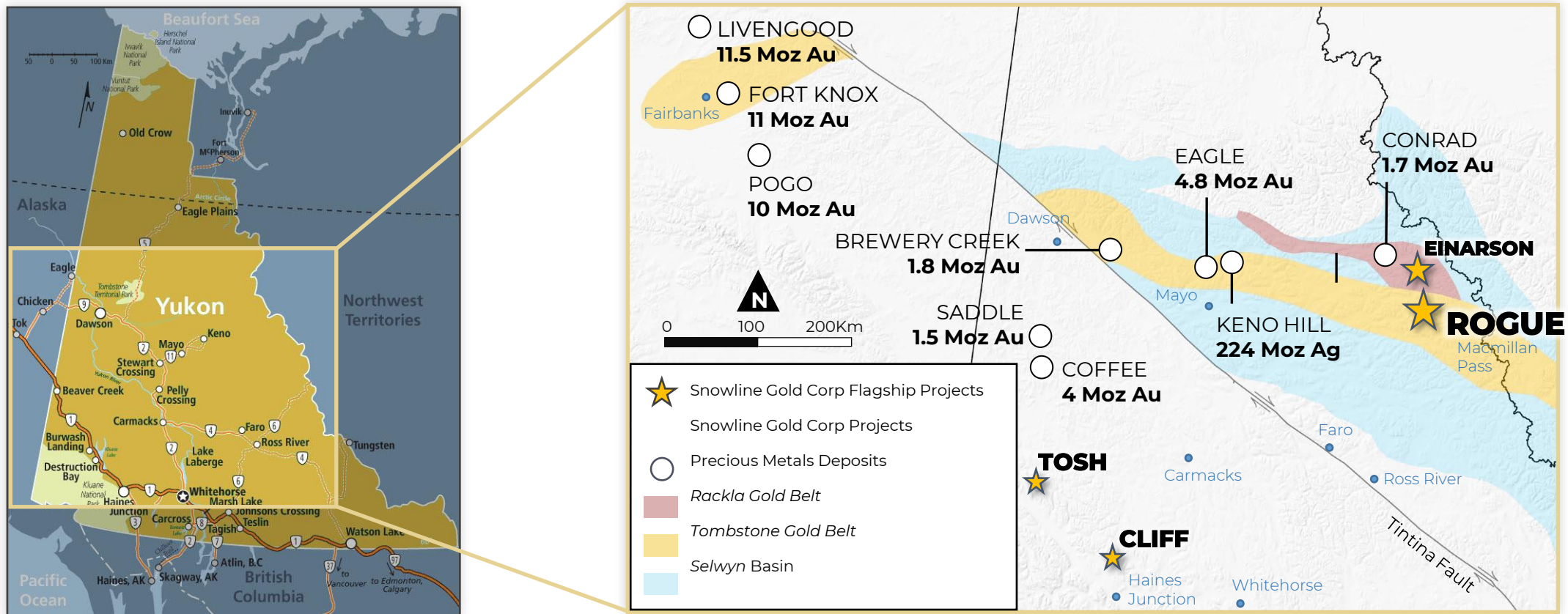
- **YUKON-BASED FATHER-SON PROSPECTING TEAM** Snowline's portfolio spun out from private, Yukon-based, **family-owned prospecting company**
- **DECADES SPENT IN THE YUKON'S SELWYN BASIN** Over **30 years' exploration** in the Yukon, pursuing new ideas in prospective geology
- **>1% OF THE YUKON'S SURFACE AREA** previously staked and optioned, generating large datasets, new discoveries and fresh ideas



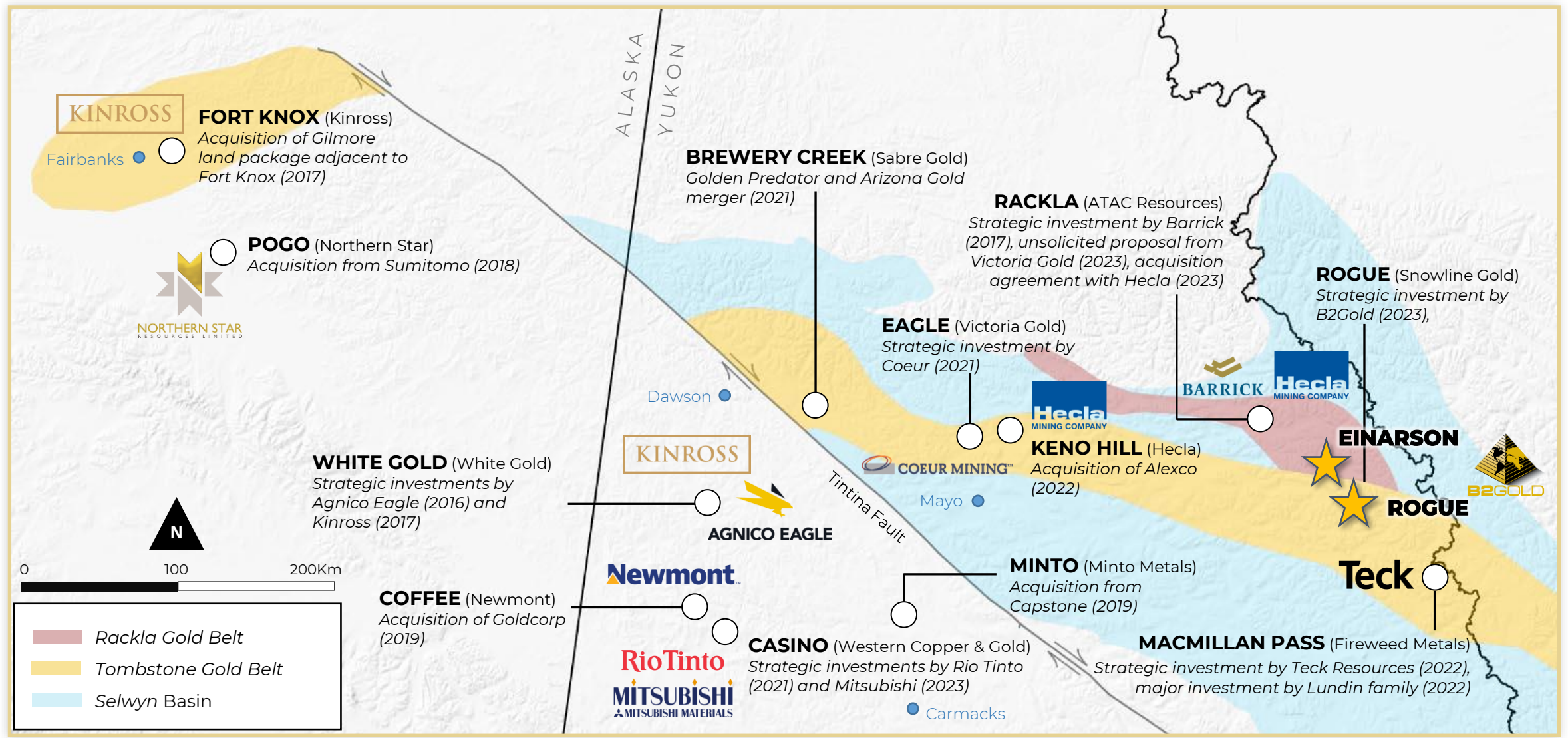
APPENDIX

A NEW LIGHT ON THE YUKON

- Snowline’s flagship, **district-scale gold projects** occupy the intersection of two prolific mineral belts
- **Rapid growth**, with **potential Tier 1 gold discovery** made on Rogue Project in company’s first season
- **Large proprietary dataset** with **first-mover land position** in **Canada’s newest gold district**



APPENDIX INCREASING INVESTMENT IN THE REGION



APPENDIX COMMITTED TO LAND & PEOPLE



Seeds of native plants harvested locally from Snowline's project area in 2021, used in ongoing reclamation

Photo courtesy of Yukon Seed & Restoration



Year-round water quality and hydrology monitoring initiated at discovery stage, with local First Nations participation

Photo courtesy of Ensero Solutions



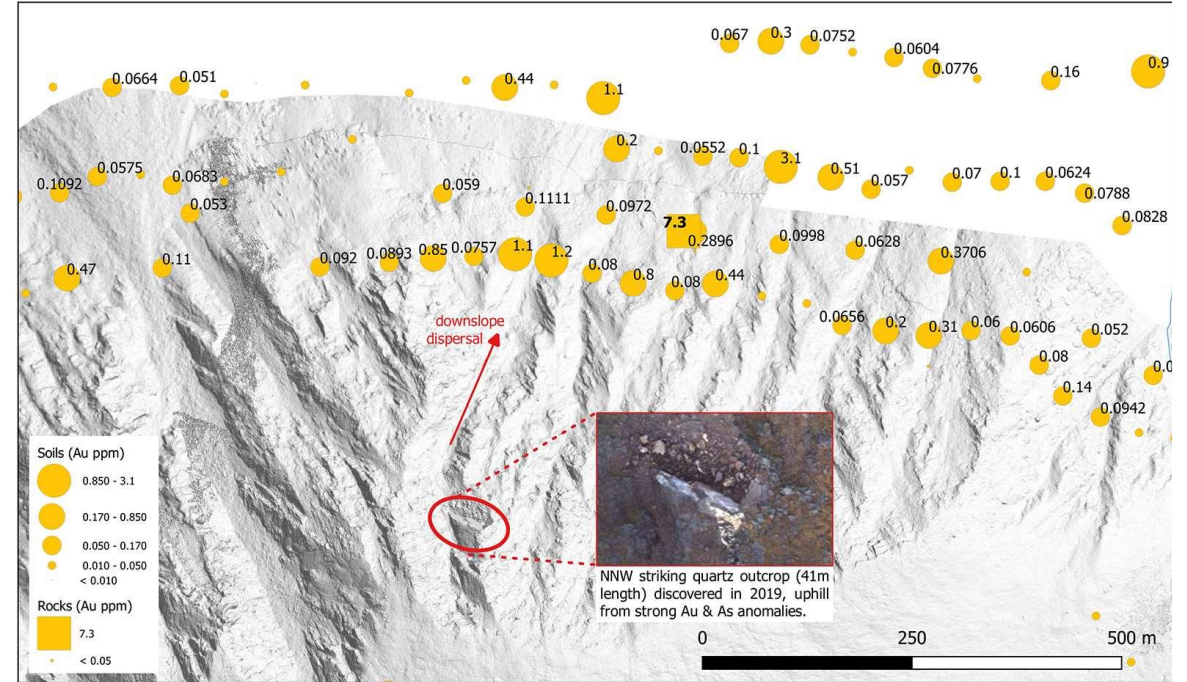
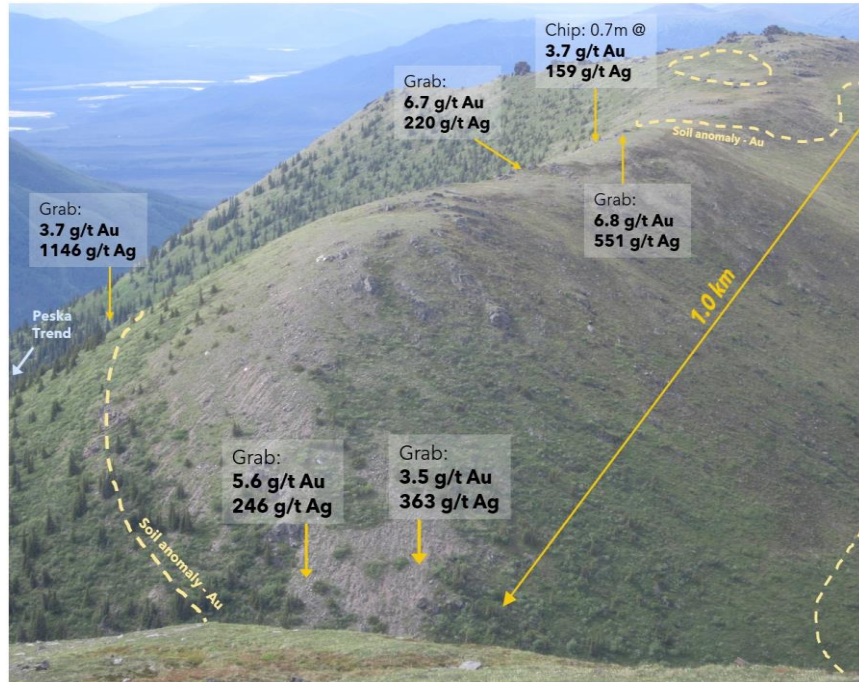
Yukon-based management and ownership, with community presence and participation

Mayo, Yukon, Career Fair



Progressive, real-time reclamation of surface disturbances, with participation and oversight of First Nations owned company

Photos courtesy of Yukon Seed & Restoration



TOSH

- LOCATION:** Hosted in **same stratigraphy, similar structural setting & spatial relationship** to evolved intrusive units as **Coffee deposit** (Newmont Goldcorp, 4 Moz Au*) 115 km north
- MINERALIZED ROCK SAMPLES** up to **6.8 g/t gold** and up to **1,146 g/t silver** over **15 km** area

CLIFF

- ANALOGUE:** Property geology analogous to the **Juneau Gold belt** which hosts 7,000,000 oz Au of historical production
- GEOCHEMICAL SAMPLING:** identified **1.6km x 300m** soil and talus fine anomaly grading to **3.1 g/t Au**

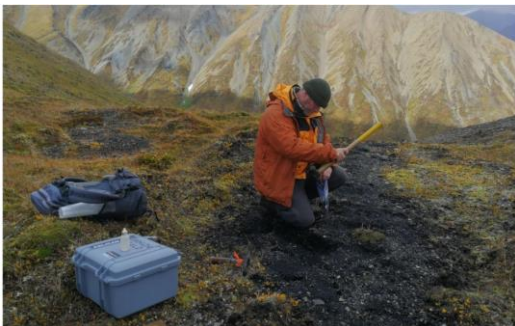
APPENDIX OTHER GOLD ASSETS: URSA

GOLD TARGET:

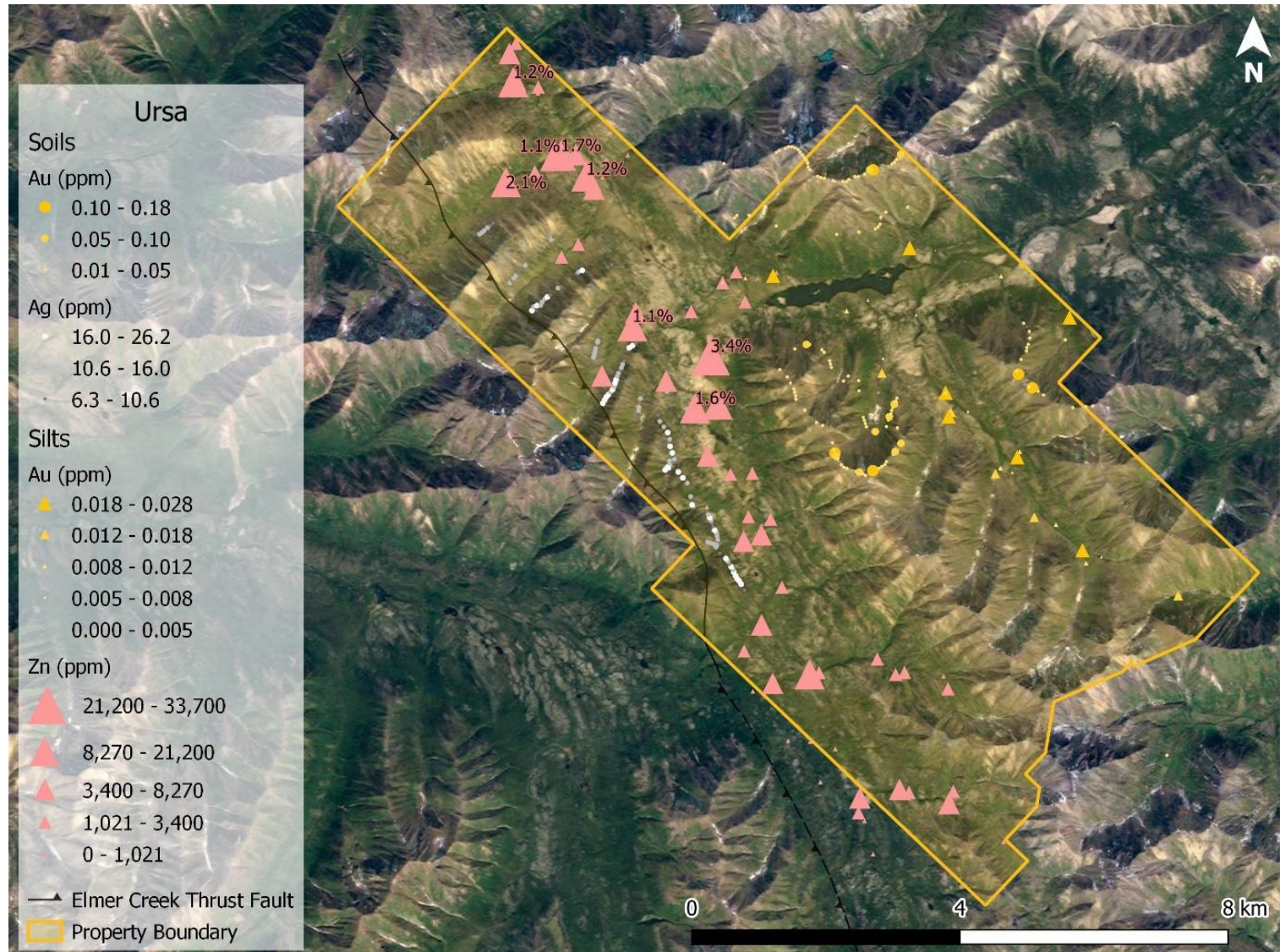
- **9-kilometer trend** of elevated gold in heavily folded carbonaceous black shales and cherts.
- Geological setting similar to Russia's **Sukhoi Log** deposit (67 Moz Au at 1.9 g/t*)

SILVER AND BASE METAL TARGET:

- **14-kilometer trend** of highly anomalous **zinc, silver, copper, molybdenum, nickel and vanadium**
- **2.7-kilometer subsection** has a median soil concentration of **14.8 g/t (0.43 oz/ton) silver**.



Dr. Craig Hart, Snowline Chair





SNOWLINE
GOLD CORP

SNOWLINE GOLD CORP

Investor Presentation

TSX-V: SGD | OTCQB: SNWGF

SNOWLINE GOLD CORP.

1012-1030 W Georgia St
Vancouver, BC V6E 2Y3

Contact Us

info@snowlinegold.com
snowlinegold.com

Follow Us:

