

COMPANY EXPOSURE

Gold

PROJECT LOCATION

Yukon, Canada

STOCK CODECSE: SGD
OTCQB: SNWGF**SNOWLINE GOLD CORP****MANAGEMENT TEAM**

Scott Berdahl	CEO & Director
Matthew Roma	CFO
Sergio Gamonal	Chief Geologist
Thomas Branson	VP Exploration
Zoë Goodyear	Database Manager
Steve Rennalls	Director of Operations
Stephanie Hansen	Director of Marketing & IR

BOARD

Dr. Craig Hart	Independent Chair
Sarah Weber	Independent Director
Gunther Roehlig	Independent Director

RECENT ANNOUNCEMENTS

12/22/22	Snowline Gold Intersects 338.0 m of 1.3 g/t Au including 207.0 m of 1.8 g/t Au at its bulk tonnage Valley Discovery, Rogue Project
11/15/22	Snowline Gold intersects 2.5 g/t Au over 128.2 m from surface within 285.2 m of 1.4 g/t Au at its Valley Zone, Rogue Project
10/12/22	Snowline Gold intersects 318.8 m of 2.5 g/t Au including 108.0 m of 4.1 g/t Au from surface at its Valley Zone, Rogue Project
08/24/22	Snowline Gold intersects 2.3 g/t Au over 282.9 m at its Valley Zone, and commences drilling at Gracie Zone, Rogue Project

KEY FINANCIALS (JAN 1, 2023)

Share Price	\$2.94
Shares Outstanding	132.2 M
Market Capitalization	\$388.5 M
Share Price: Year high-low	\$4.10 - \$0.57
Cash	\$22.3 M

MAJOR SHAREHOLDERS

Keith Neumeyer	First Majestic
Quinton Hennigh	Crescat Capital
Eric Sprott	Sprott

SHARE PRICE PERFORMANCE (JAN 2023)**CONTACT: INFO@SNOWLINEGOLD.COM**

Snowline Gold Corp

Exploring District-Scale Gold Systems in the Selwyn Basin

COMPANY OVERVIEW

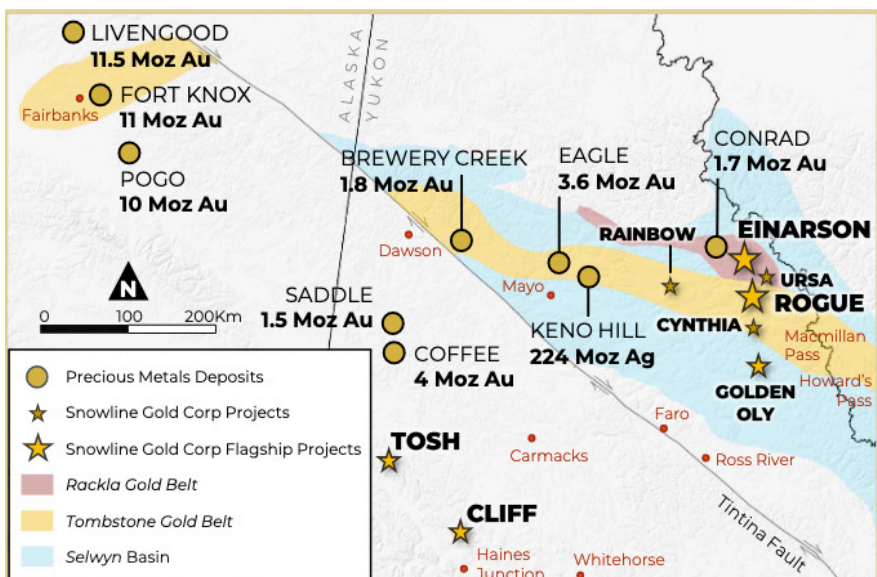
Snowline Gold is a Yukon based explorer with one of the territory's largest mineral portfolios, covering over 280,000 hectares in eight primary projects. Snowline is swinging for the fences—and connecting. Exploration in 2021 saw two significant drill discoveries on two separate targets. In 2022, with 13,320 m drilling completed and 40% of assay results pending, Snowline is set for an active and news-filled off-season as we ramp up to our 2023 exploration campaign.

Investment Highlights**GOING BIG:**

Snowline is focused on its flagship, district-scale, greenfield gold discoveries with the goal of putting a new North American gold district on the map

EXPLORATION PROGRAM HIGHLIGHTS:

- ◆ **Valley discovery:** near surface, bulk tonnage Ft Knox style gold system with unusually high grades
- ◆ Two major gold discoveries in first-ever drill programs on two separate targets during Phase I drilling
- ◆ Valley Zone, Rogue Project: V-22-10 assay results **318.8m @ 2.55 g/t Au from surface**

The Opportunity: Rogue & Einarson

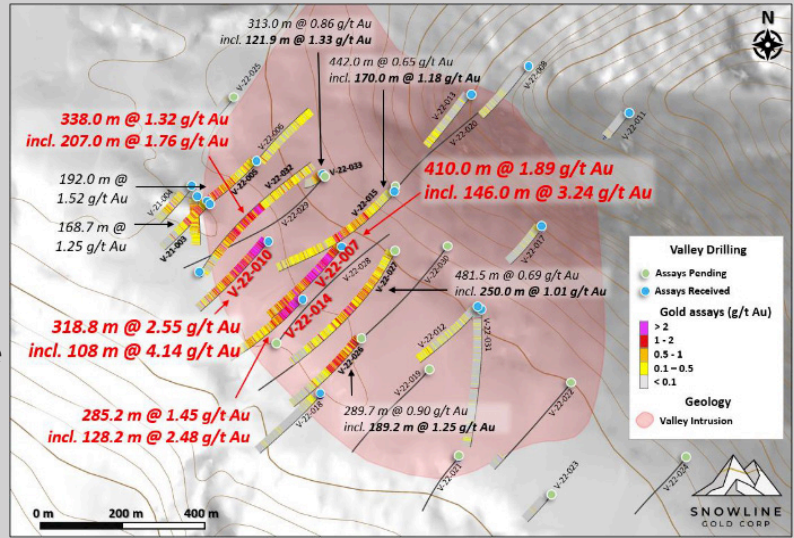
- Snowline's flagship, district-scale gold projects are at the intersection of established mineral belts
- \$20M+ spent by past operators on regional exploration affords rapid, low-cost entry at the drill discovery stage
- Three separate drill discoveries of visible gold bearing systems in Snowline's first three Phase I drill campaigns, proving potential of Canada's newest gold district



Rogue Gold District

VALLEY ZONE

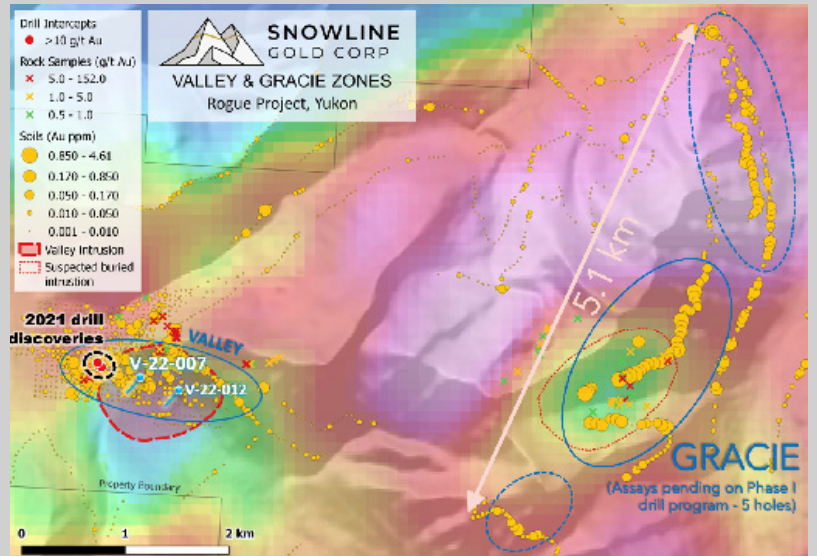
- Near-surface, bulk tonnage drill discovery with extensive sheeted vein arrays and large >1 g/t Au to multi-gram gold intervals
- Tombstone gold belt: setting, age and style comparable to multi-million ounce deposits, including Ft Knox (Kinross) and Eagle (Victoria Gold) but with unusually high grades
- Sheeted vein mineralization across an open 1,000m x 800m x 400m area
- V-22-10 assay results: **318.8m @ 2.55 g/t Au from surface**
- Abundant visible gold, with metallurgical testing underway



- Assays pending for 13 of 32 drill holes completed this season, with large zones of high vein densities and visible gold

GRACIE ZONE

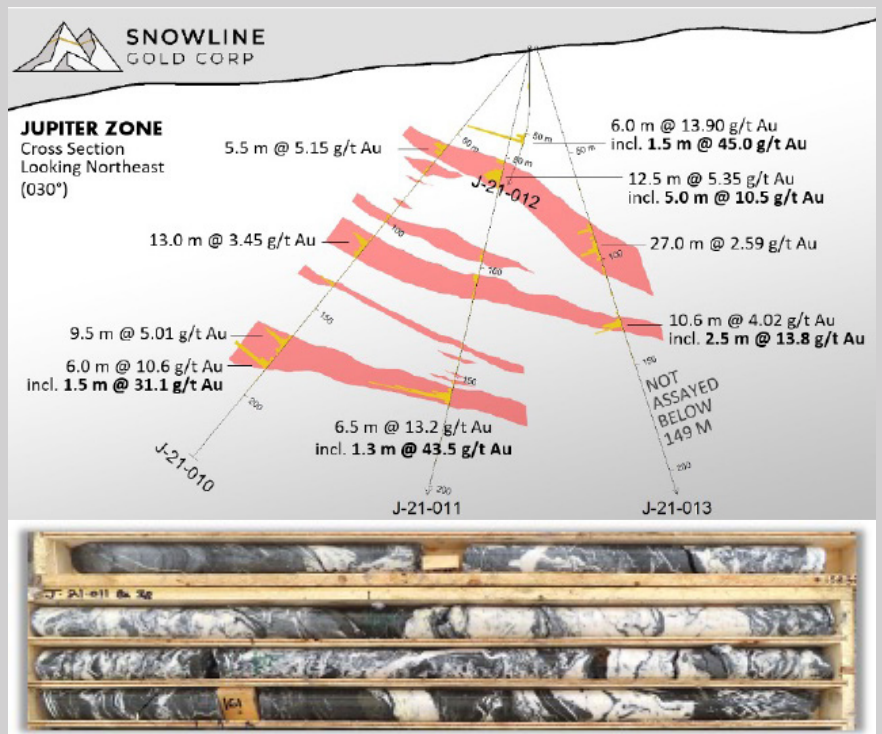
- Kilometers-scale gold-in-soil/talus fines anomaly above intact buried intrusion
- 43 soil samples from a 1,600 x 800 m central area average 0.49 g/t Au, with 8 samples >1 g/t Au
- Visible gold observed in 4 of 5 drill holes, with assays pending



Einarson Gold District

JUPITER ZONE

- Total greenfield: Zero gold-focused exploration prior to 2010
- Widespread gold mineralization to 63.9 g/t Au (over 0.3 m) encountered in first-ever drilling at Jupiter in 2021
- Interpreted as an epizonal orogenic gold system – a novel discovery for this region
- Open, 3 km zone of elevated to anomalous gold in soils – only 1.1 km drill-tested to date
- Potential analogues include Agnico's Fosterville Gold Mine and New Found Gold's Queensway discoveries



J-21-011: 6.5 m @ 13.2 g/t Au